



# Delta

Ceiling Mount

Energy Recovery Ventilator (ERV)

Fresh Air Supply Fan With HEPA Filter

Perfectly Green, Perfectly Quiet

[www.deltaelectronicsindia.com](http://www.deltaelectronicsindia.com)



# DC Motor Energy Recovery Ventilator with HEPA filter



## VEB150ATH

Suitable Room Size:  $\leq 100$  sq. m

## VEB350ATH

Suitable Room Size:  $\leq 230$  sq. m

## VEB500ATH

Suitable Room Size:  $\leq 330$  sq. m

## VEB250ATH

Suitable Room Size:  $\leq 165$  sq. m

High Efficiency DC Motor

Multiple High Efficiency Filters

Thinning Case for Easy Installation

Constant Airflow Technology

Energy-saving and Quiet

Three Years Warranty



### High Efficiency DC Brushless Motor

Adopting brushless DC motor enormously decreases power consumption and maintains a longer life, compared with AC motor. Energy can be saved up to 60% - all day operation without wasting energy.



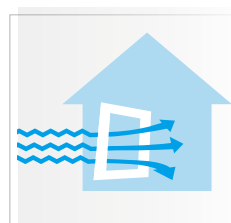
### Energy recovery core

Adjust humidity & temperature, to save more energy while working with HVAC system.



### Thinning case Two-sided installation

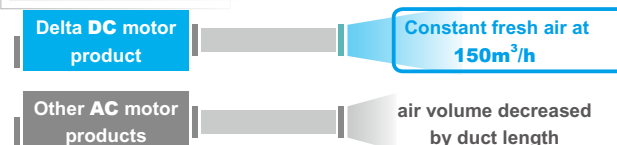
- ▲ Saving more space to decorate.
- ▲ Installing at both sides, adapting to different configuration.
- ▲ A access door with quick hinge is easy to maintenance.



### Constant Fresh Air Intake

Even through the filters and accumulated dusts, constant air volume can be provided in the air outlet within our designed duct length

\*Applicable models:  
VEB150ATH/VEB250ATH/VEB350ATH



\*compared with AC motor models at 150m<sup>3</sup>/h



### Selection of Control Panels Easy to Monitor

- ▲ Sensing indoor PM2.5, CO<sub>2</sub>, temperature and humidity.
- ▲ Smart control auto sensing and control good indoor air quality.
- ▲ Schedule setting: 7 days and 4 periods a day.



### RS485 interface

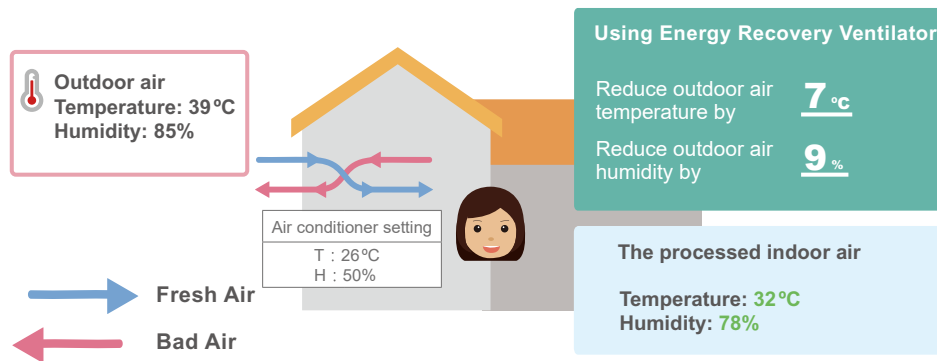
- ▲ MODBUS RTU protocol
- ▲ System integration & control
- ▲ Multiple ERVs control

# High-quality fresh air for your home

## Whole-house Fresh Air

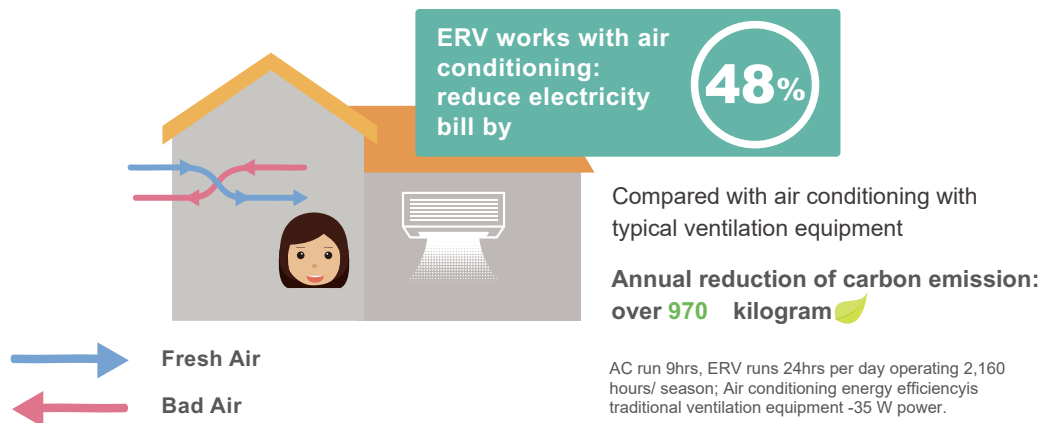
Delta energy recovery ventilator (ERV) intakes the outdoor fresh air, filters and purifies the air efficiently before delivering air into the indoor space. Besides that, the system can exhaust the indoor stale air to the outdoor environment at the same time, achieving the whole house ventilation. Users can obtain high-quality fresh air, even when the whole room is enclosed and airtight.

By case: VEB250ATH model at 250m<sup>3</sup>/h air flow



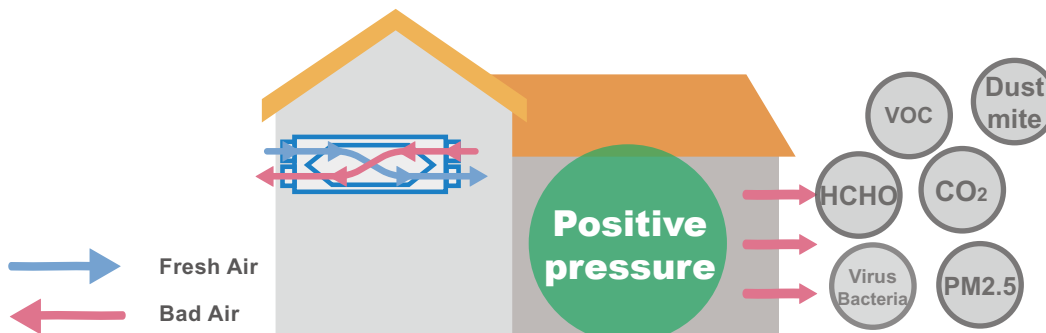
## Energy Savings with 24 hours Non-stop Operation

ERV can exchange heat & moisture of the indoor and outdoor air to reduce the loading of air conditioning, achieving comfy living environment and more energy savings.



## Positive Pressure Design - Exhaust Indoor Polluted Air

The design can enable indoor positive-pressure environment and squeeze indoor polluted air to the outdoor, preventing outdoor unfiltered polluted air from entering indoor space.



# Total home ventilation with air exchange unit

## Specifications

Model	Mounting Size	Weight	Power Rating	Power Consumption	Work Speed	Air Flow	External Static Pressure	Noise	Enthalpy Recovery Efficiency		Note
									Cooling	Heating	
Part No.	mm	kg	Vac/Hz	Watt	rpm	m³/h	Pa	dB-A	%		
VEB150ATH	564 x 1022	28	220/50	17	1075	80	25	22	68	76	Low
				27	1330	110	40	27	67	75	Middle
				40	1630	150	70	36	64	74	High
VEB250ATH	564 x 1022	28		30	1360	95	60	26	67	75	Low
				50	1800	145	95	35	66	74	Middle
				98	2270	250	125	37	62	73	High
VEB350ATH	743 x 1114	42		93	1680	250	108	37	65	72	Low
				142	1950	300	150	38	63	72	Middle
				168	2050	350	150	39	60	71	High
VEB500ATH	1055 x 1005	51		60	1090	260	55	33	59	63	Low
				120	1440	390	75	36	57	63	Middle
				180	1680	500	90	39	55	61	High

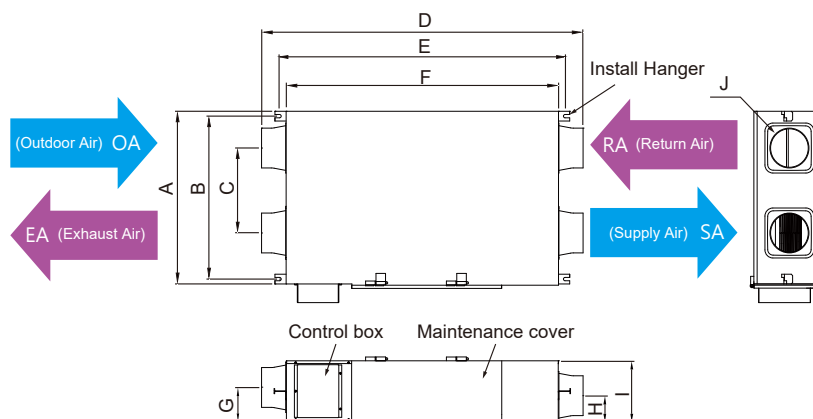
- Noise is measured with air duct in semi-anechoic chamber, 1.5 meter distance from the housing.
- The test result of the air flow is central value with tolerance range of  $\pm 10\%$ .

- All readings are typical value at rate voltage.
- Specifications are subject to change without notice.

## Dimension

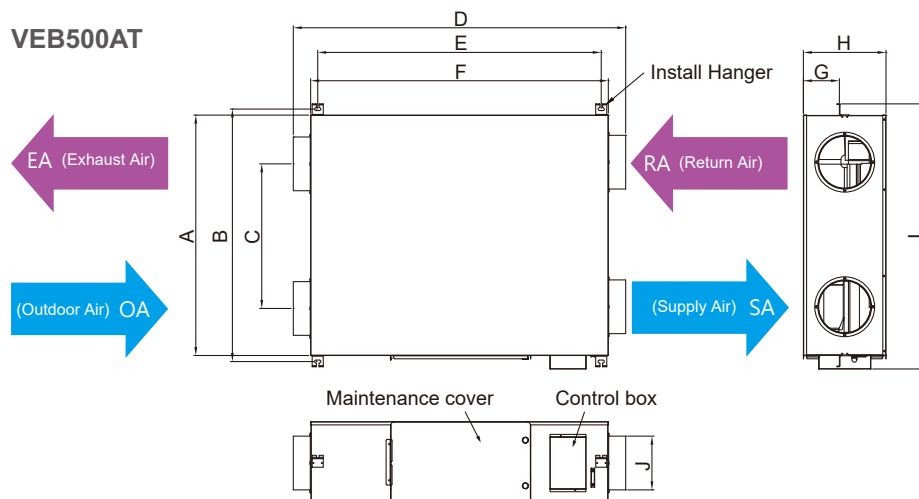
### VEB150AT/VEB250AT /VEB350AT

Unit:mm



Item	VEB150ATH VEB250ATH	VEB350ATH
A	620	800
B	564	743
C	280	360
D	1088	1230
E	1022	1114
F	980	1055
G	122	150
H	106	103
I	218	253
J	Ø145	Ø145

### VEB500AT

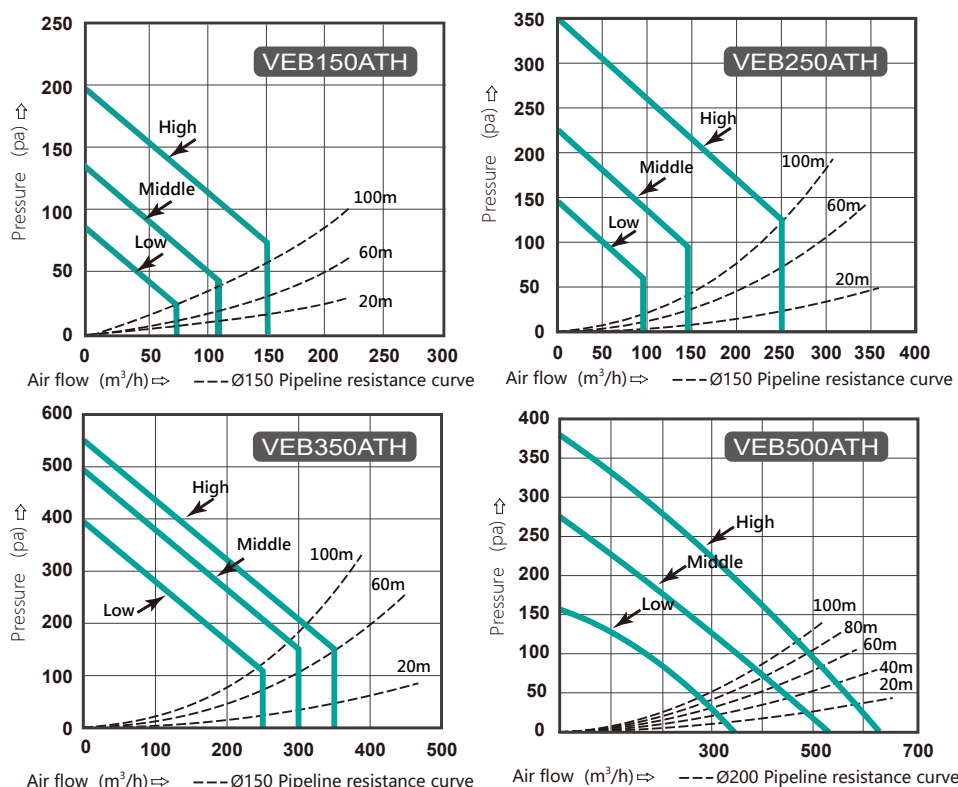


Item	VEB500ATH
A	998
B	1055
C	728
D	1235
E	1005
F	1065
G	30
H	312
I	1122
J	Ø197



# Delta Fresh Air Systems Bring Nature to Your Home

## Performance Curve

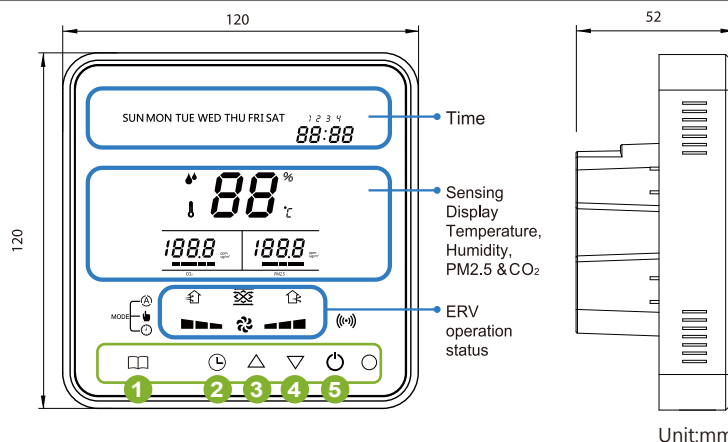


## Controller

### VFRU-ERVT-02SS (Optional)



- 1 switch working mode
- 2 set clock and timing parameters
- 3 parameter reduce
- 4 parameter increase
- 5 power on/off



## Accessory List

Model	Item	Part No.
VEB150ATH VEB250ATH	Pre-filter	VFRU-ERV-01PF
	Activated Carbon	VFRU-ERV-02AF
	HEPA	VFRU-ERV-03HF
	Exchanger core	VFRU-ERV-01EX
VEB350ATH	Pre-filter	VFRU-ERV-04PF
	Activated Carbon	VFRU-ERV-05AF
	HEPA	VFRU-ERV-06HF
	Exchanger core	VFRU-ERV-02EX
VEB500ATH	Pre-filter	VFRU-ERV-07PF
	Activated Carbon	VFRU-ERV-08AF
	HEPA	VFRU-ERV-09HF
	Exchanger core	VFRU-ERV-03EX



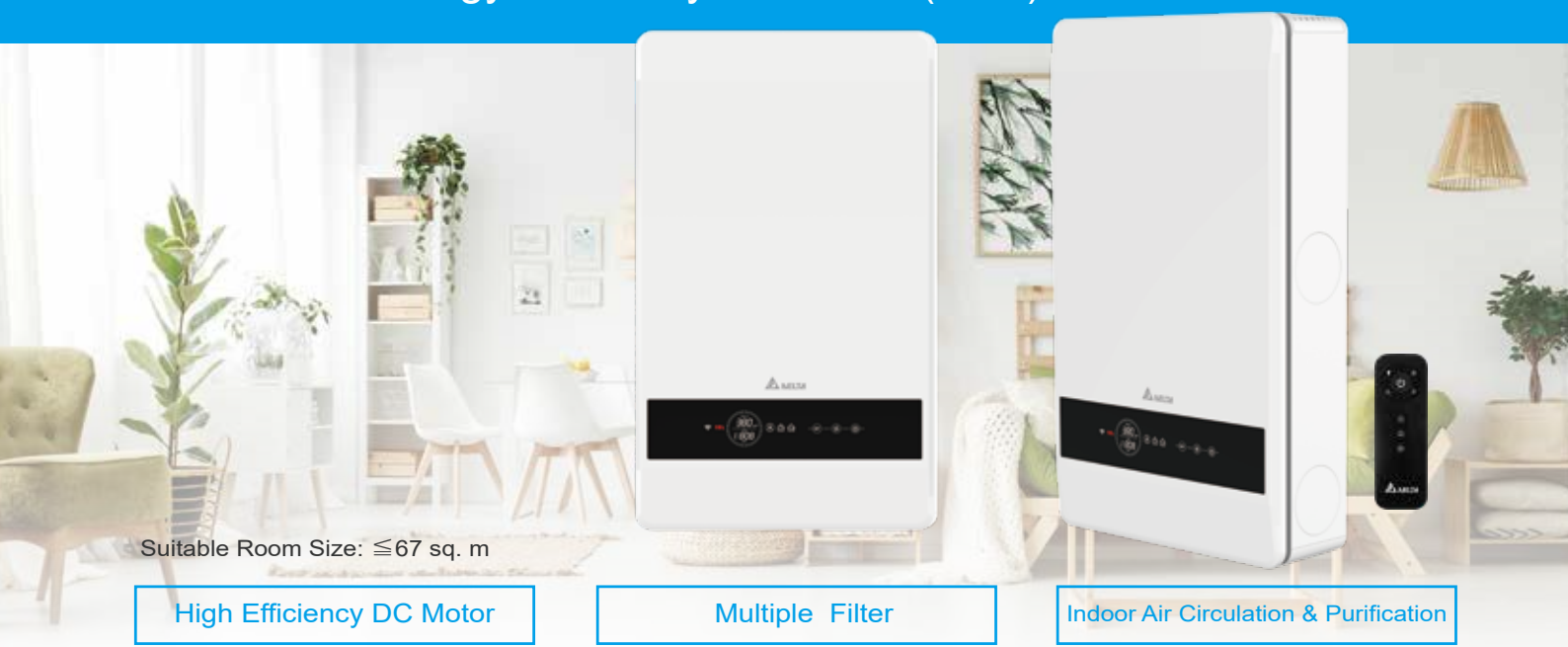
# Delta Wall Mount Energy Recovery Ventilator (ERV)

Perfectly Green, Perfectly Quiet

[www.deltaelectronicsindia.com](http://www.deltaelectronicsindia.com)



# Wall Mount Energy Recovery Ventilator (ERV) with PM2.5 Filtration



Suitable Room Size:  $\leq 67$  sq. m

High Efficiency DC Motor

Multiple Filter

Indoor Air Circulation & Purification

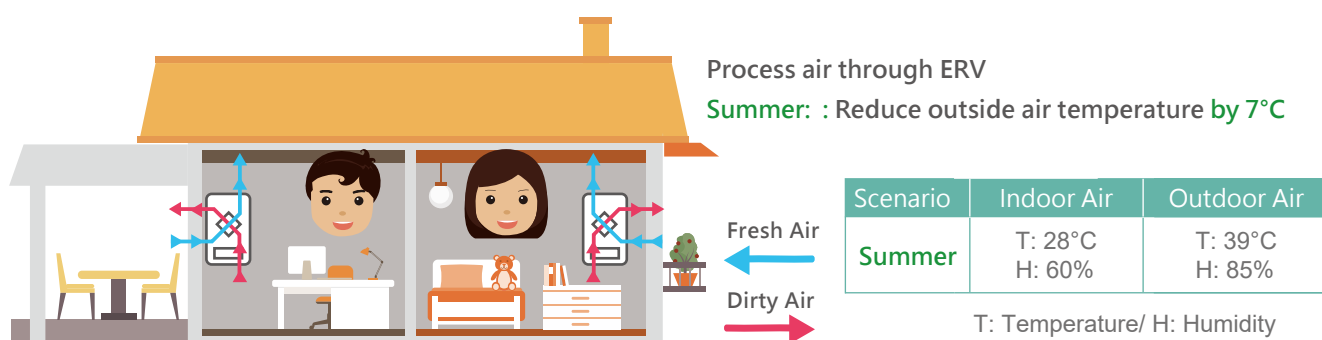
Silence Operation

Multiple Safety Protection

Three Years Warranty

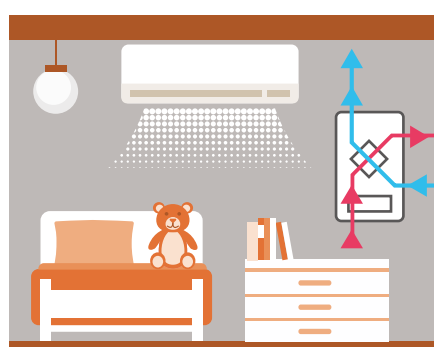
## Ideal for Separate Spaces

Delta ERV enables air exchange and filtration for individual room, improving indoor oxygen levels - not only makes your living space healthier & comfortable, but saves electricity bills.



## Ideal for Year-round Uses

Operating year-round, Delta ERV accommodates indoor temperature & humidity in different seasons and optimizes the functions of air conditioning. High efficiency motors save energy & save bills in the long term.



Outdoor

ERV functions with air conditioning (AC):

Summer bill savings up to 38%



vs. Traditional ventilation equipment with AC motor

Annual AC power consumption

decreasing by 1 space between 469 KWh

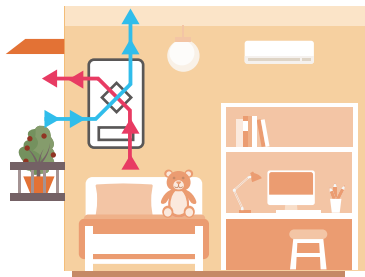
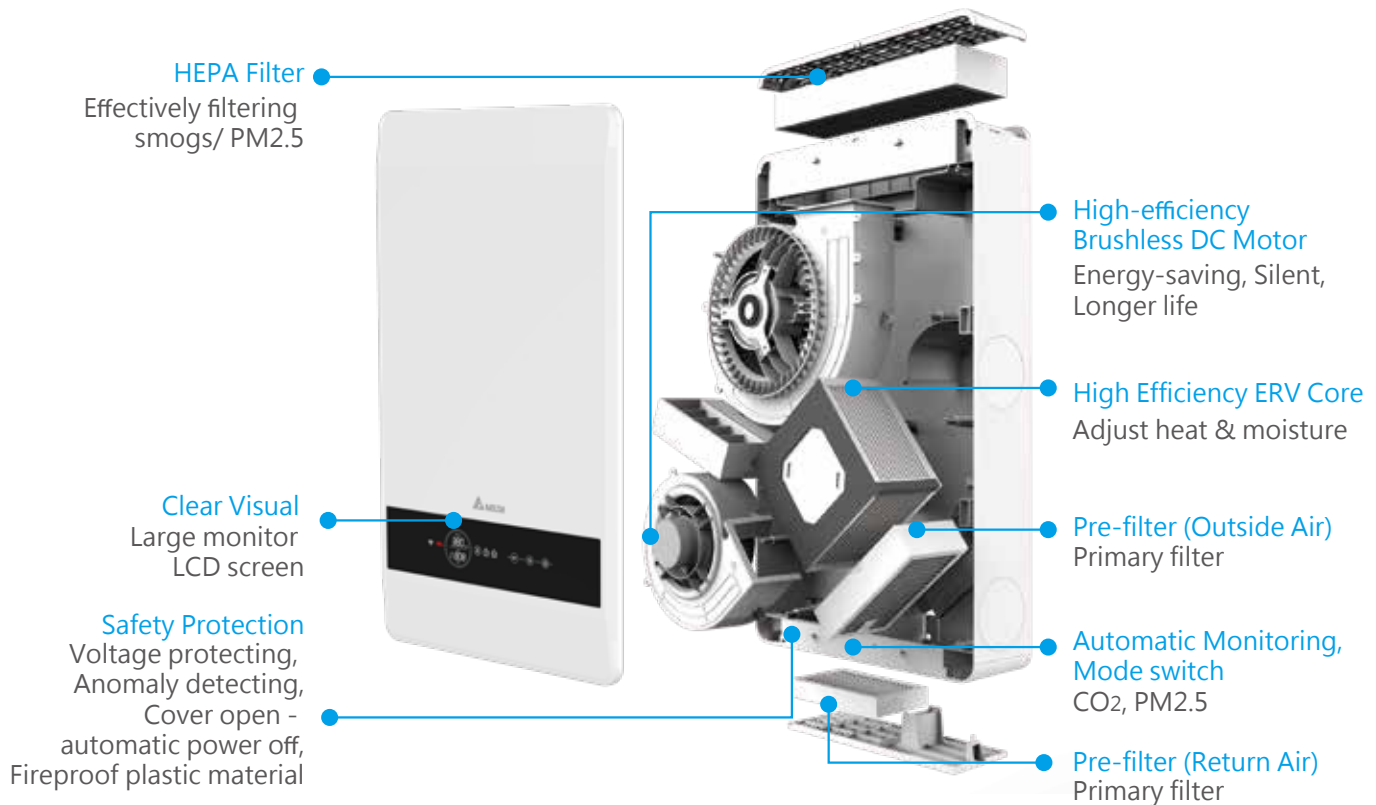
Annual carbon emission decrease more than 360 kg.

ERV: 24-hour operation, 2160 hours per season

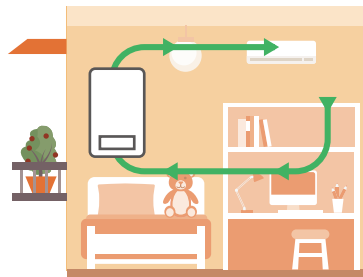
AC: 9 hours daily operation, 810 hours per season



# Double Filtration, Double Protection



**Fresh Air Mode - Energy Recovery**  
Intake and filter fresh air



**Indoor Air Purification Mode**  
Purify indoor air

## Double Functions: Fresh Air Mode & Indoor Air Purification

Switch modes in different environment requirement by choice or automatic switch mode (smart monitoring).

## High Efficiency DC Brushless Motor



Adopting brushless DC motor enormously decreases power consumption and maintains a longer life, compared with AC motor. Energy can be saved up to 60% - all day operation without wasting energy.

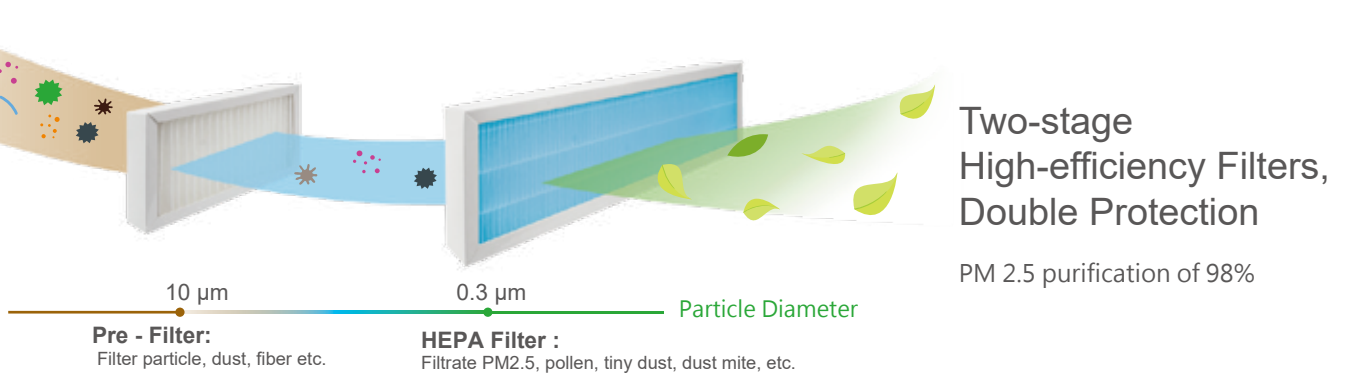
## Real-time Environment Monitoring



Sensors embedded - CO<sub>2</sub> & PM2.5 monitor - smart detection and control



# Next generation HEPA filter

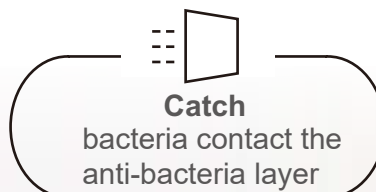
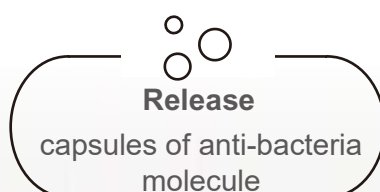


## Next-generation Anti-bacteria Filter, Three-stage Filtration Process

The brand-new anti-bacteria HEPA filter applies micro-capsule filtration technology, which effectively captures common bacteria & virus via ventilation. Regular filter replacement is ideal for your health.



## Triple protection to eliminate virus & bacteria



The HEPA filter can catch common flu virus, enterovirus, spores, and molds, etc., by the test (eurofin:AAE74431, TUV:721655096-2C, etc.)

# Best Selection for Living Spaces

## Installation



## Simple Installation, Minor Decoration

### Simple Installation Simple Decoration

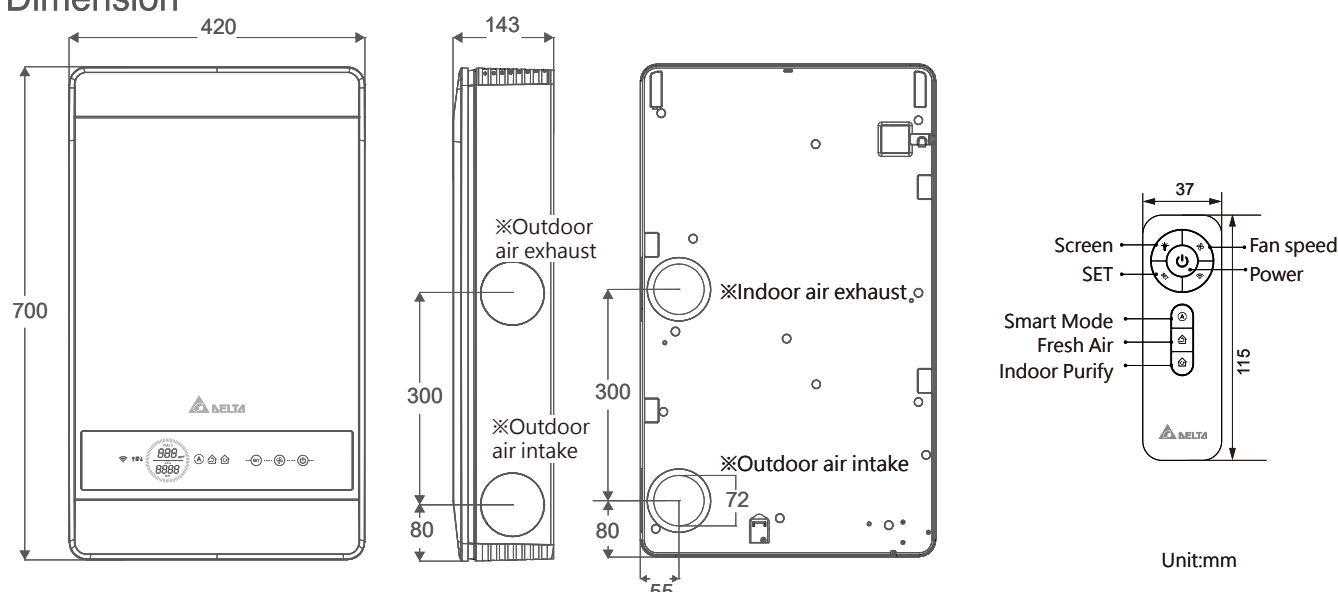
Simple Installation, Simple Decoration  
Just install exhaust outlet on the outer wall - wall-mounted design - 220 Vac power applicable - convenient for house decoration

## Specification

Model		VEB100ATH-W	
Suitable room size		70 m <sup>2</sup>	
Power supply		220 Vac / 50 Hz	
Fan Speed		Three	
Maximum air volume	Air purification	200 CMH	1500 RPM
	Fresh air	100 CMH	1350 RPM
Energy recovery efficiency	Cooling	> 50% @ 100 CMH	
	Heating	> 55% @ 100 CMH	
Heat recovery efficiency	Cooling	> 60% @ 100 CMH	
	Heating	> 70% @ 100 CMH	

Model		VEB100ATH-W	
Input Power		10 - 45 W	
PM 2.5 Filtration efficiency		> 98%	
Effective of Ventilation rate		> 90%	
Control		Remote controller	
Dimension (W x D x H)		420×143×700 mm	
Ducting size		75 mm	
Weight		10 kg	
Noise	Fresh Air mode	< 44 dB(A)	
	Indoor Air Purification	< 45 dB(A)	

## Dimension





Delta Electronics India Pvt. Ltd.

Ozone Manay Tech Park, "A" Block, 3rd Floor  
Hosur Road, Hongasandra Village, Bangalore –  
560068.  
Tel: +91-80-6716-4843.  
Email: [IAQsales.ind@deltaww.com](mailto:IAQsales.ind@deltaww.com)  
Website: [www.deltaelectronicsindia.com](http://www.deltaelectronicsindia.com)

DELTA-IAQ\_WALLMOUNT\_ERV\_DEI\_202107

- You are restricted from modifying the Content and/or the Package, including but not limited to reproduce, modify, and reprint any Contents without DELTA' s prior written permission, which infringe the DELTA' s registered trademark rights.
- Design and specifications are subject to change without notice.